

# **Ecology & Livelihoods**

## **Case study of Jaisamand Catchment Area: Jhamri Sub-Basin**

**Based on data  
provided by**

**Jaisamand Consortium**

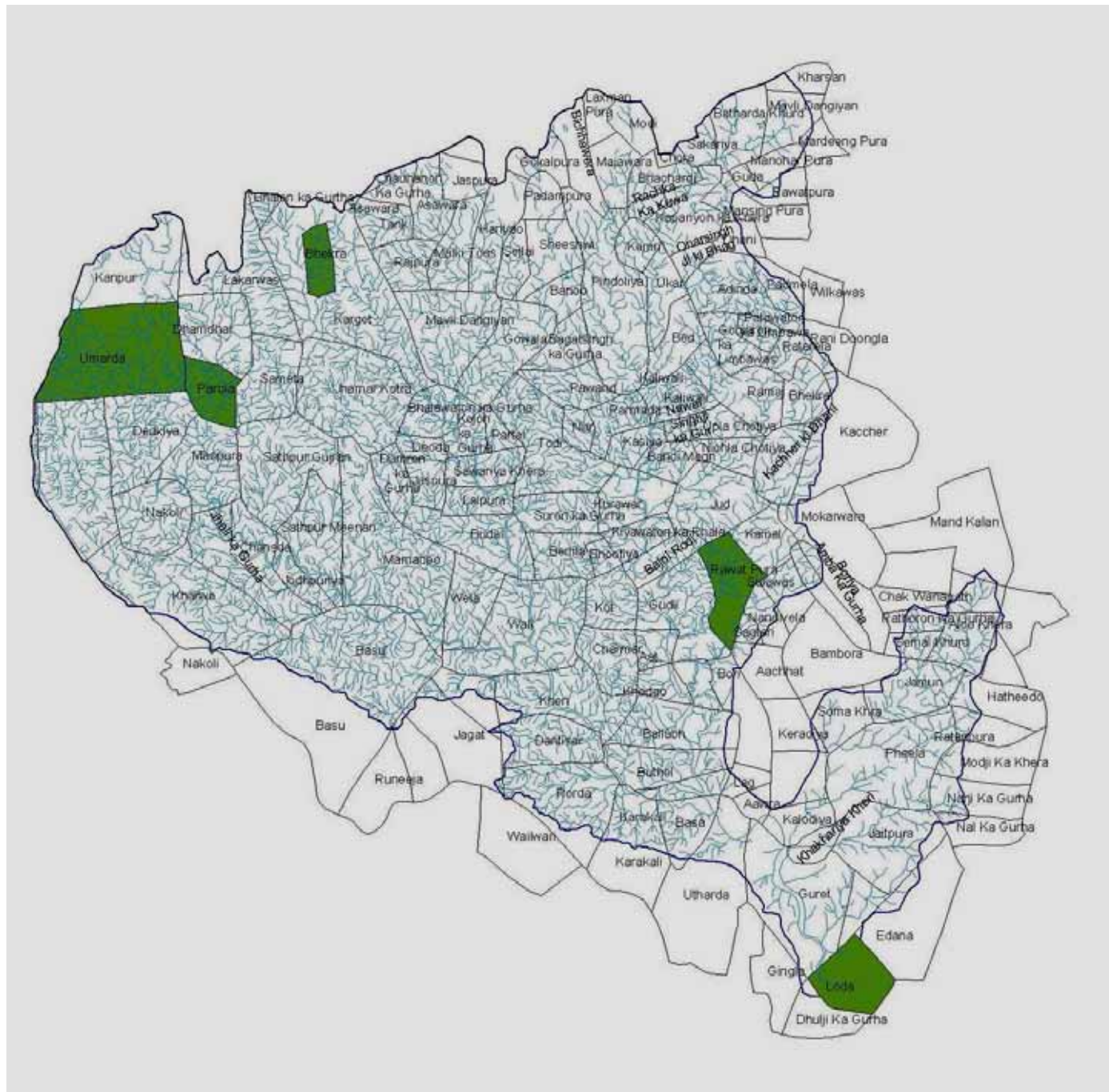


# QUICK OVERVIEW

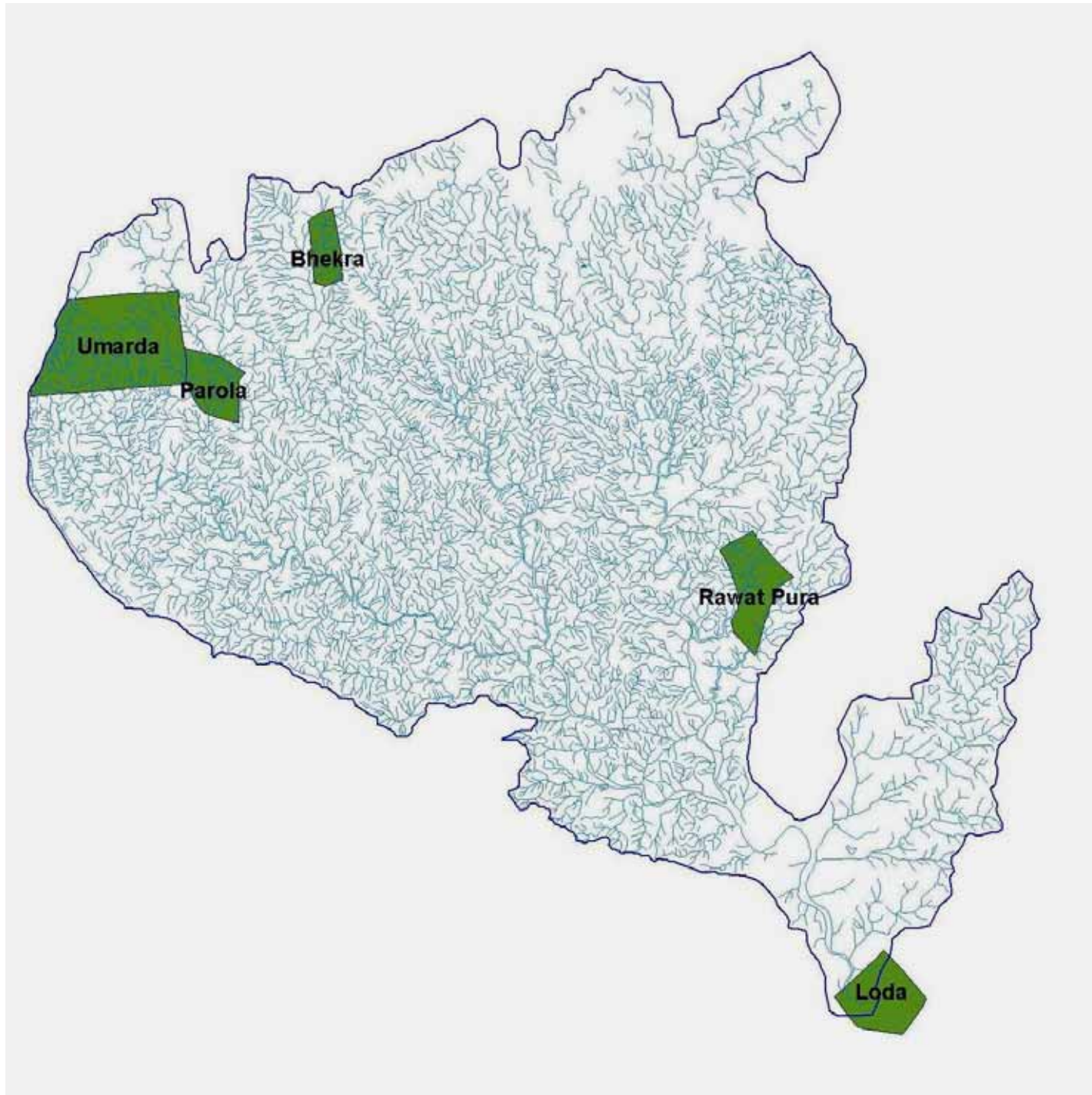
## Village selection criteria

- Industrial area
- Stone mining
- Sand mining
- Agriculture & Animal husbandry (Dangi-Rawat)
- Protected Area

# JHAMRI MAP



# DRAINAGE MAP



# Major Ecological Indicators...

## Availability

- Water
- Feed

## Physiographic features & Soil condition

- Upstream – Midstream – Downstream
- Slope
- Soil - depth, structure

## Social Indicators

- Livelihood pattern
- Social customs

## Economic Indicators

- Investment pattern

## Stress (Pollution)

- Bio – Indicators

Nest

Hives

Bat, Roosting

Water bloom

- Physical Indicators

Dust

Water quality





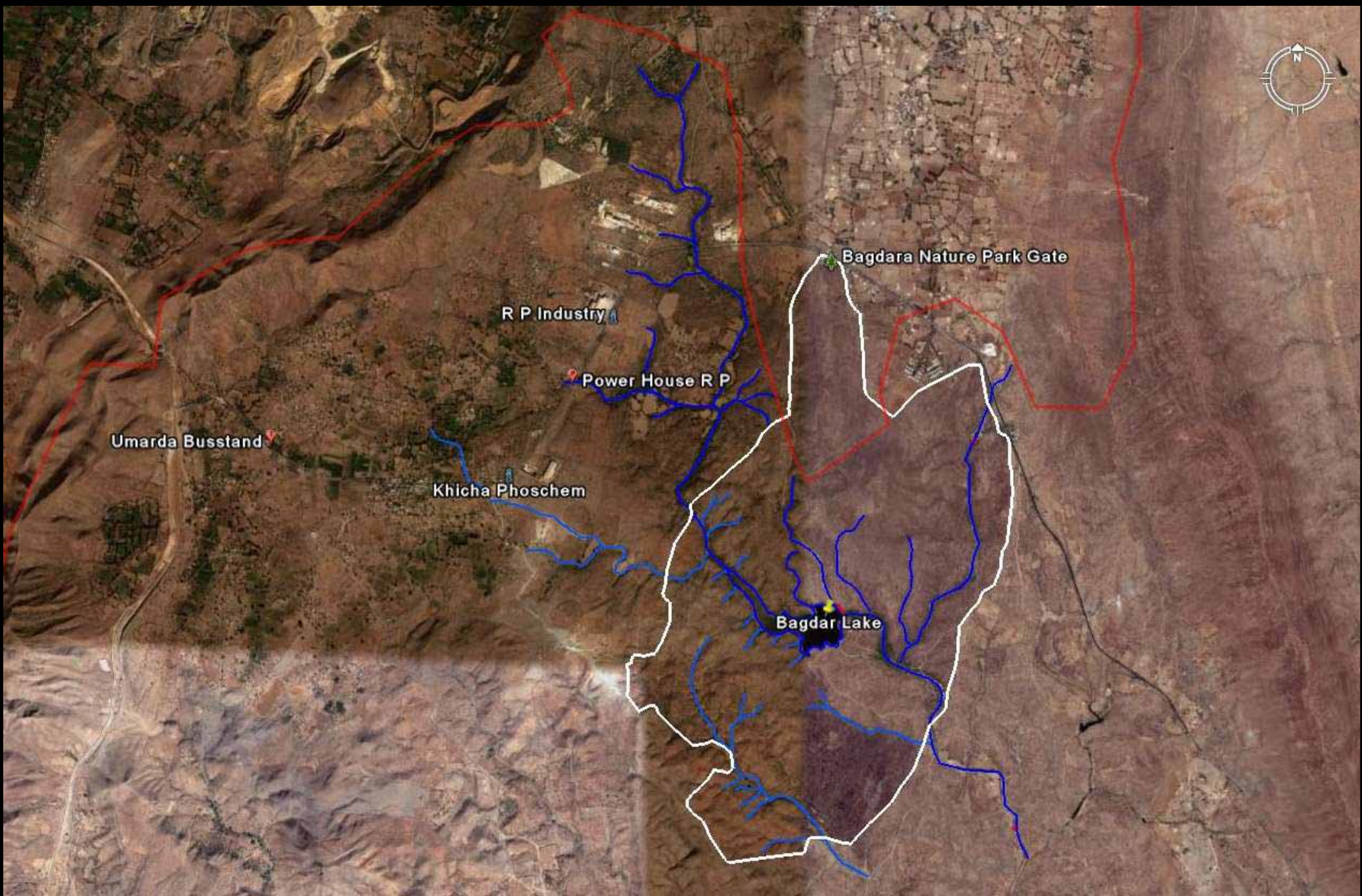
Busstand  
Power House R P  
Khicha Phoschem  
Bhekra Stone mine

# VILLAGE PHOTO DOCUMENTATION...

Rawatpura Makreri River

Loda Sand Mine







# Industrial Area: Umarda













# PAROLA (Control)

















# Baghdarraah NP



- Air Pollution
- Water Pollution
- Noise Pollution























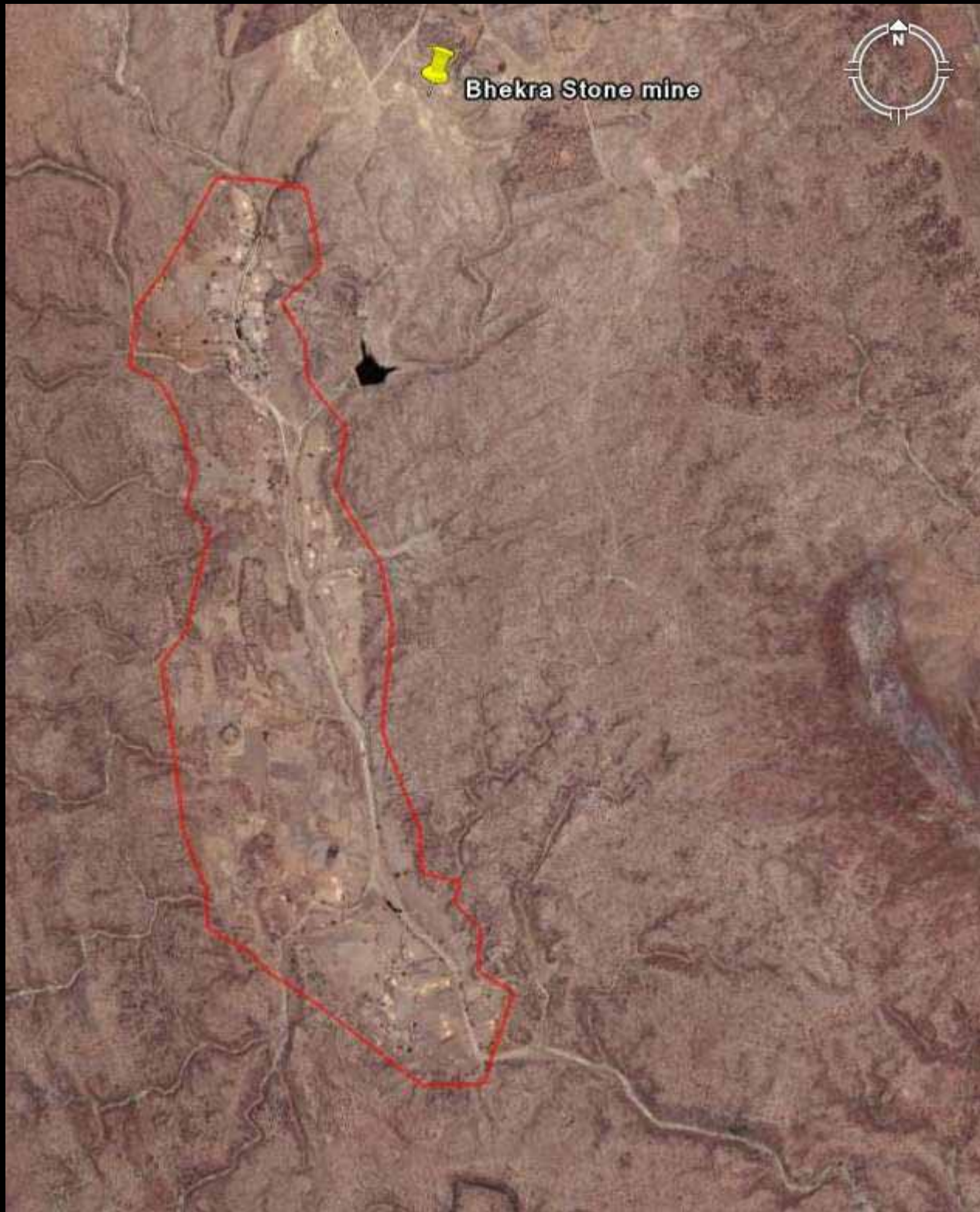








Bhekra Stone mine





# Stone Mining : Bhekra



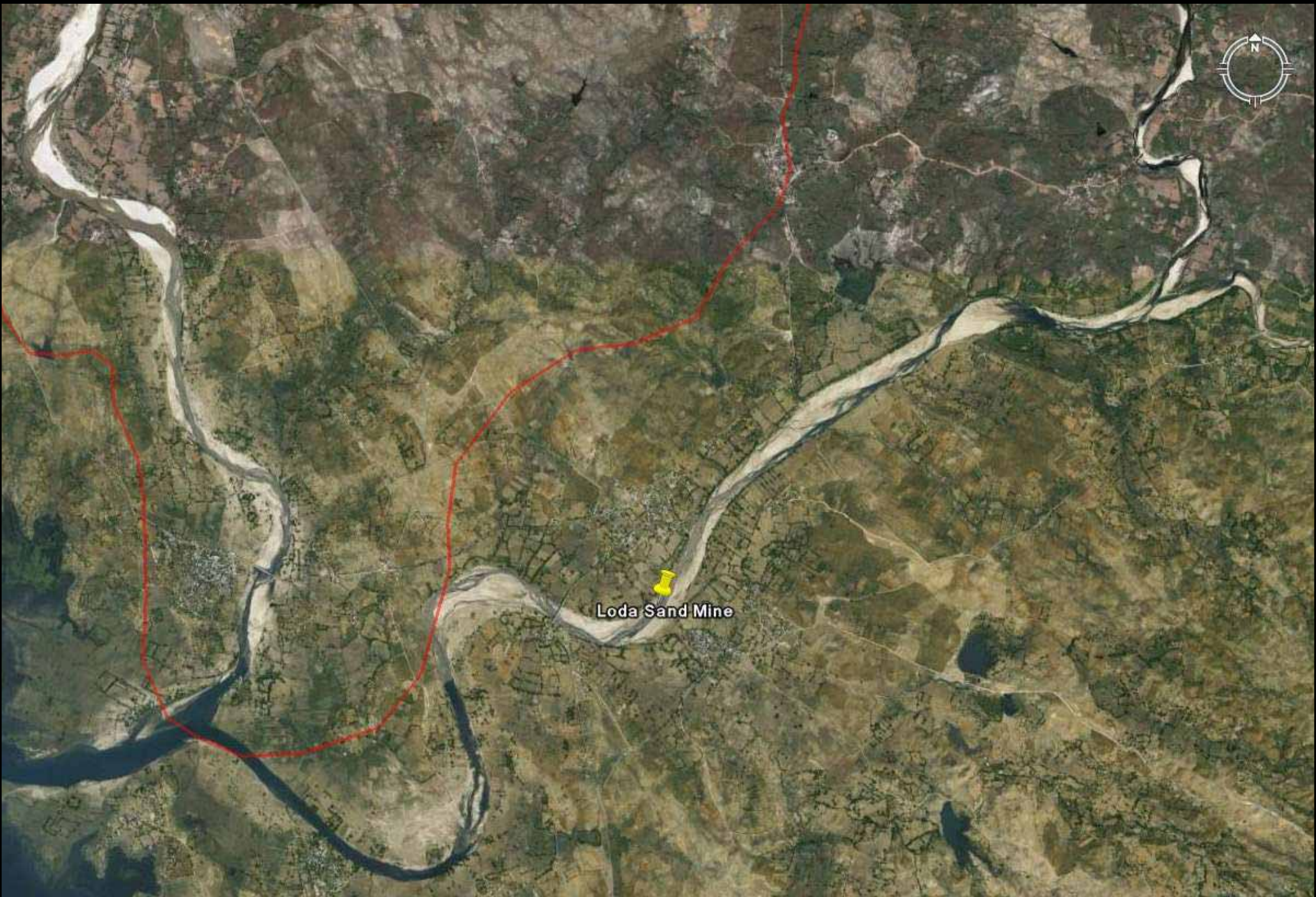












Loda Sand Mine



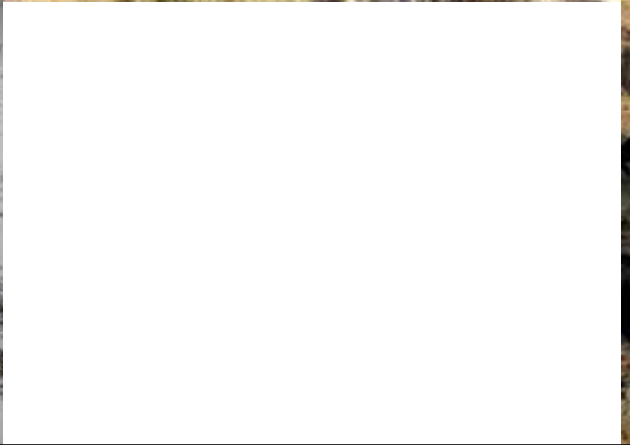
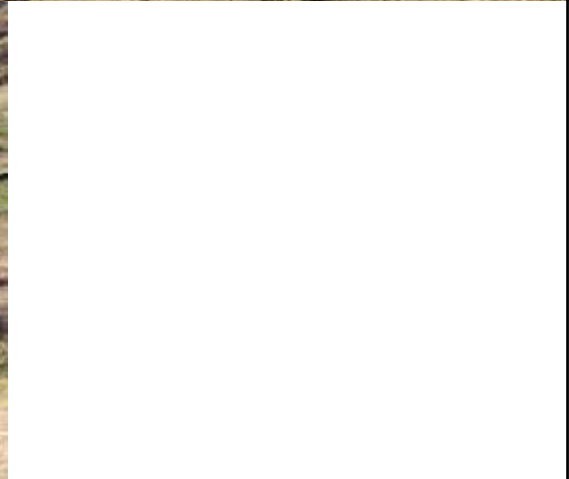
# Sand Mining : Loda







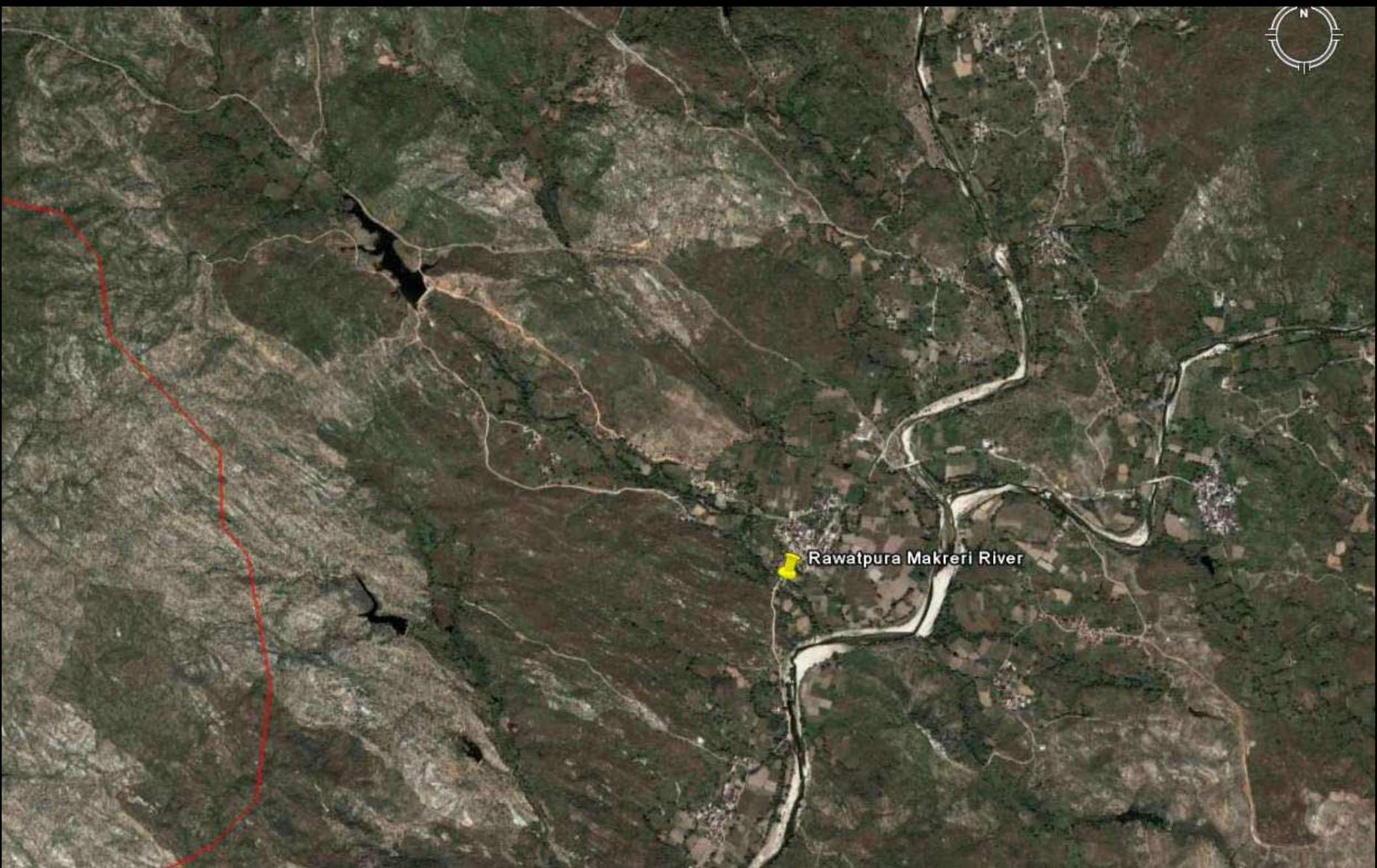








Rawatpura Makreri River







## Agriculture & A H : Rawatpura (Dangi)















## **Agriculture & A H : Rawatpura (Rawat)**













# Private Pastures : Rawatpura





# **Rapid Assessment**



# **Implication for Micro Planning**

- **NREGA**
- **FRA**
- **BIODIVERSITY CONSERVATION :**  
**PBR**
- **WATERSHED**
- **EIA**



A photograph of a dry, hilly landscape with sparse vegetation. The terrain is covered with various shrubs and small trees, some with green leaves and others with brown, dry foliage. In the center of the image, a person is standing on a small rise, looking towards the camera. The background shows a continuation of the hilly terrain under a bright, overcast sky. The word "THANKS" is superimposed in large, bold, black capital letters across the upper middle of the image.

**THANKS**