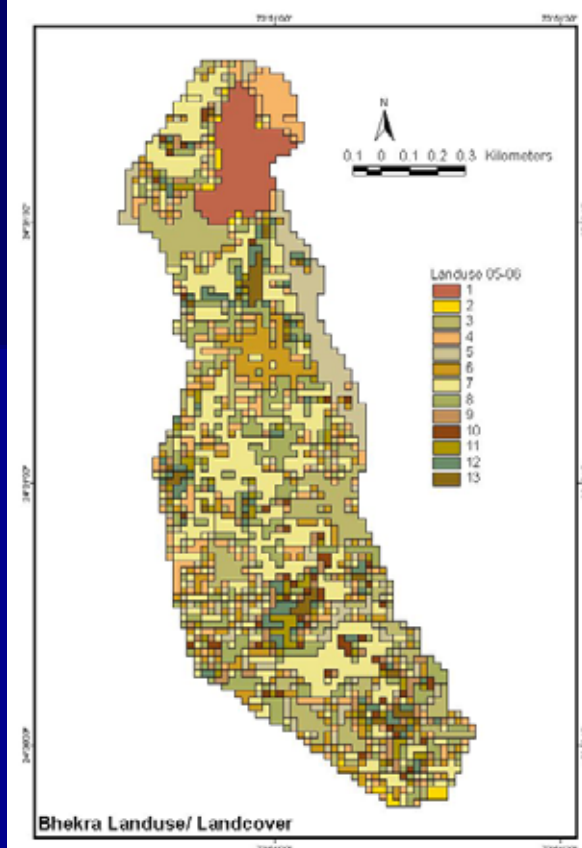
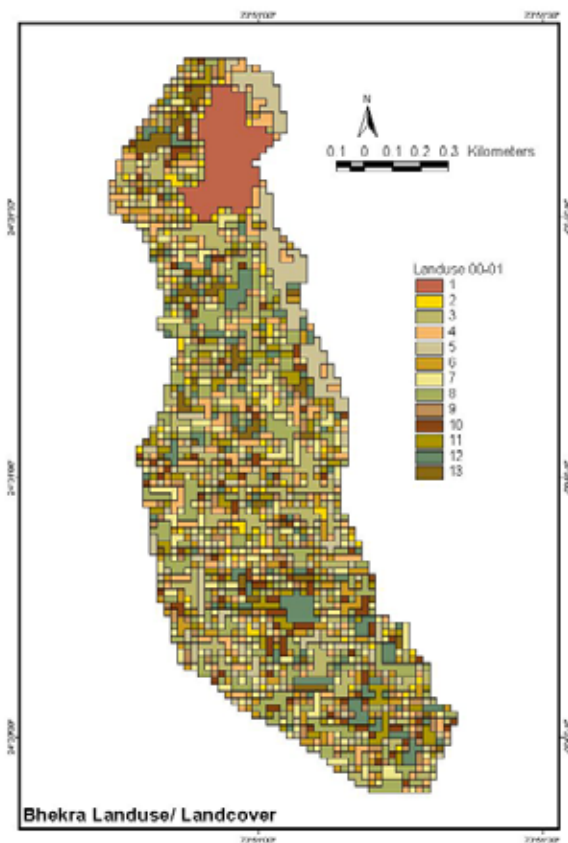
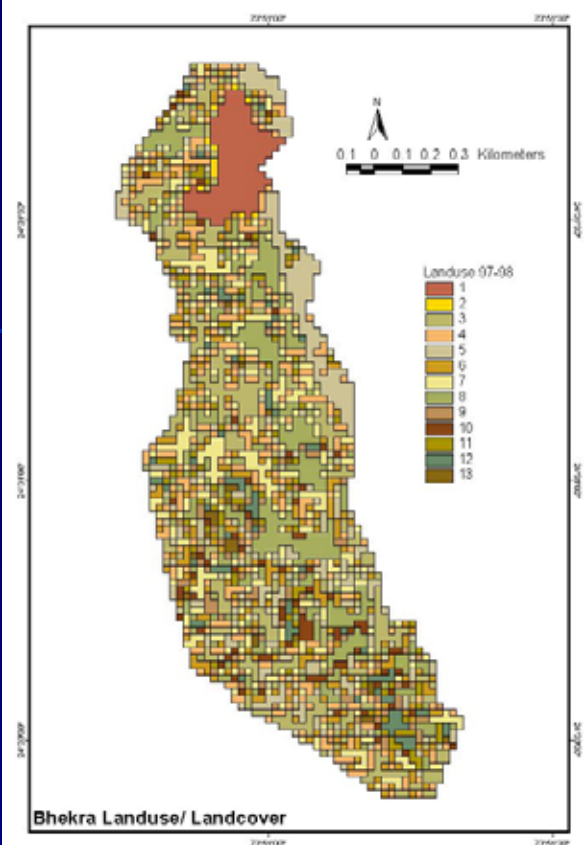


BHEKRA Presentation

SPWD - HVVS





Class	Landuse	1997-98	2000-01	2005-06
1	Built-up land	6.008	7.010733	7.00509
2	Fallow land	0.6523414	1.222882	3.461249
3	Barren/rocky area	18.885114	16.45824	16.58553
4	Dense forest	17.573621	12.7129	13.82003
5	Degraded forest	17.956231	13.66248	14.3314
6	River sand	14.086333	12.25282	10.29881
7	Land with scrub	18.273565	31.987	13.40844
8	Land without scrub	19.259119	17.96401	18.57495
9	Mining area	5.5943674	4.927774	6.130632
10	Waterbody	4.4829486	3.225071	6.424405
11	Rabi crop only	5.4391961	4.315924	9.596341
12	Kharif crop only	4.2341344	5.37056	9.91712
13	Double crop	1.5381391	2.872484	4.429512
		133.9831	133.983	133.984

Bhekda

GPS Survey Points Plotted
on Google Imagery

4,5 & 6 : Stone Mining
15 & 27 : Waterbody

200 0 200 Meters



Stone Mining

Pastureland

Settlement

Pastureland

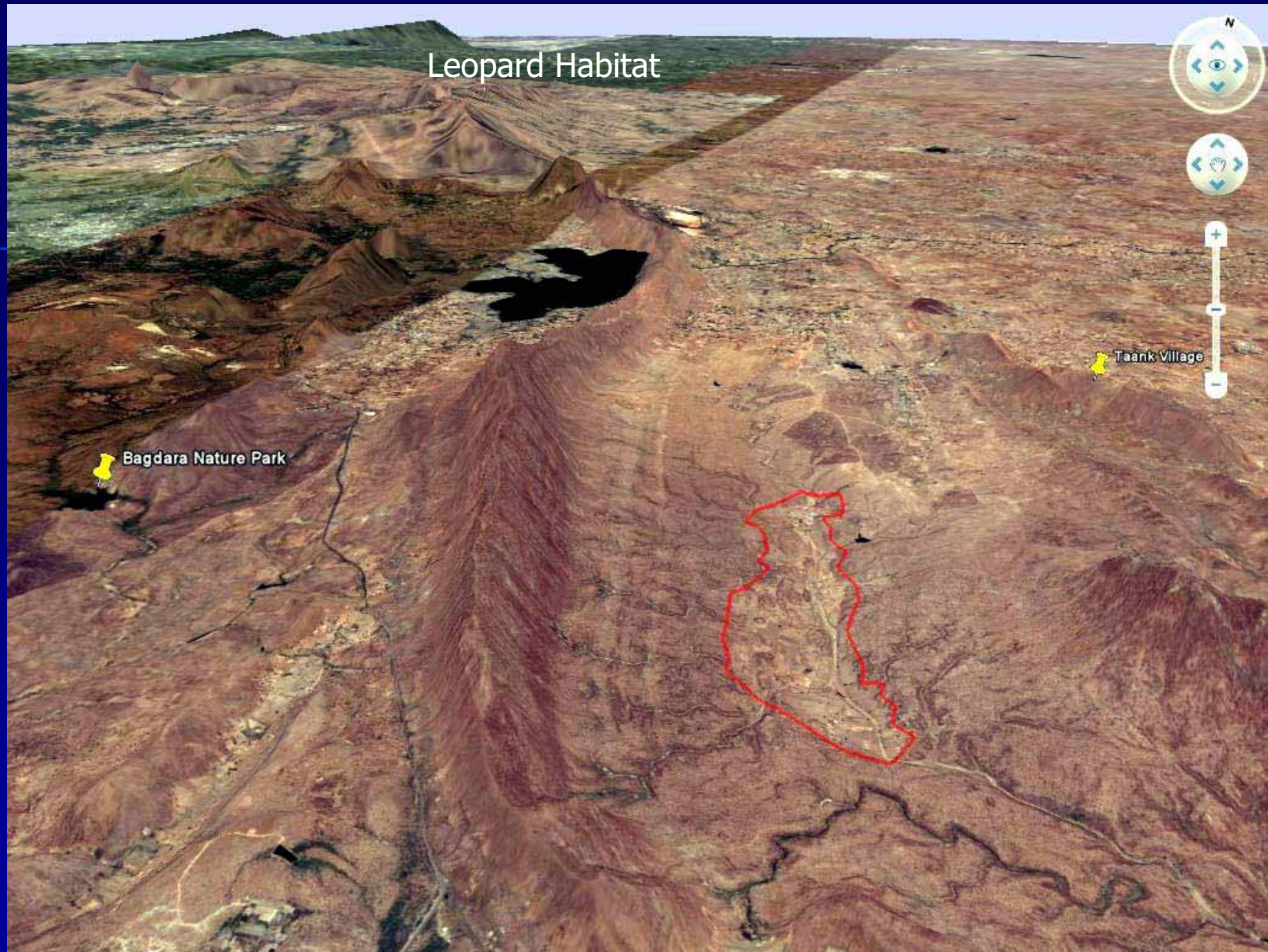


Private Pasture

Agriculture



Leopard Habitat



Stone Mining : Bhalon Ka Gurha Panchayat



Stone Mining : Bhalon Ka Gurha Panchayat





Some Ecological Niches - in Bhekra

Dead Animals in Stream



***Bamboo leaves
eaten by goats
near the
drainage line***

***Drainage line
movement of animals***



Life around Banyan Tree



***Scenes around
farmlands***



*Some scenes around a fresh
water well*



***Animal grazing
and
Nutrient recycling***



Life around Waterbody



Agriculture Eco-systems



Landuse Classes – from Village Land records

Details need to be fed to each polygon boundary for current Landuse status
- Upgradable to infinite data types

